

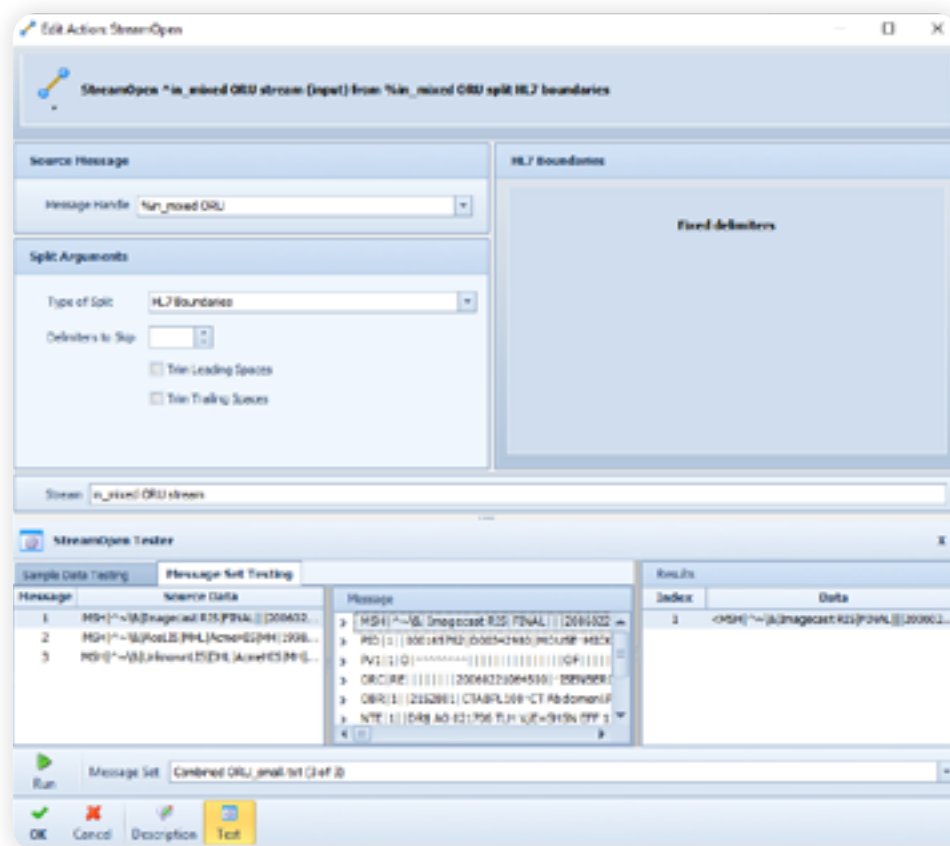


Corepoint

Corepoint MFT

Corepoint
Managed File
Transfer

Managing Files Doesn't Have to be Costly and Complicated



Manage Your File Movement Easily and Effectively with Corepoint Managed File Transfer (MFT)

Healthcare integration relies on the use of files to handle specific workflows related to X12, HL7, or other delimited types. Managing and processing these files in an efficient fashion is critical for both billing and clinical care.

The Batch Processing component of Corepoint MFT includes the ability to efficiently break apart and build up large files, up to 2GB. By using existing database operators and the batch processing operators, you can store part or all of the contents of a batch file for a period of time in a database to be sent later as the same or regrouped batch.

Corepoint MFT also takes advantage of the same configuration, monitoring, alerting, and

error handling tools as Corepoint Integration Engine. This means that the file workflow configuration is achieved with ease, and you are always aware of what is happening with the processing of your files.

Corepoint MFT offers a new approach to intelligently managing files with greater customization and flexibility — all while using the proven technology of Corepoint Integration Engine. Every workflow and system has its own unique requirements. Corepoint MFT leverages Corepoint Health's workflow expertise to provide adaptable managed file transfer solutions and the flexibility to deal with various workflows.



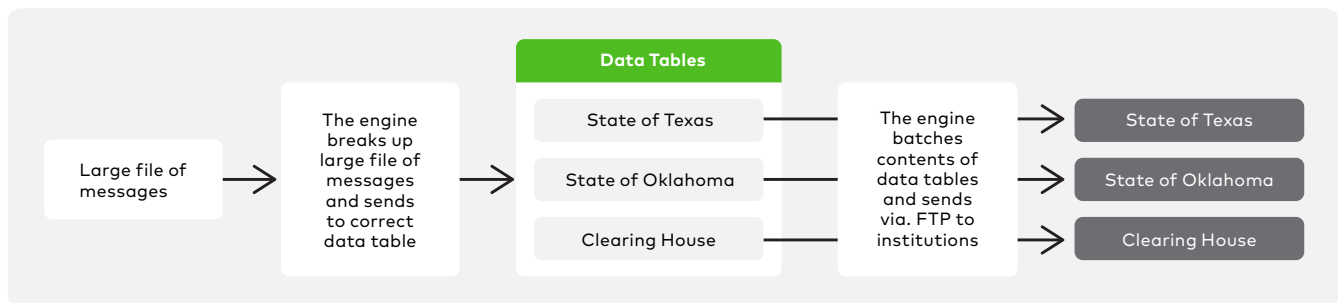
Discover the benefits of Corepoint MFT

- Upload a file to or download a file from an FTP server at a specified time interval or by request
- Write a file in a local directory, append the data to a specified file, or read messages from a folder
- Break apart and build up files based on workflow rules
- Monitor and alert on the scheduled processing of file movements
- Integrate error handling, such as retry rules for troubled connections
- Keep FTP transfers secure with FTPS and SFTP
- View graphical representations of the flow of files between applications and/or facilities
- Use Assured Availability (A2) for high availability requirements

Workflow Example: FTP Distribution

Messages are presented in a large single file. That file is broken up and sorted into three different data tables. When it is time to build the batch to be sent out, a process is triggered to gather the messages from each data table

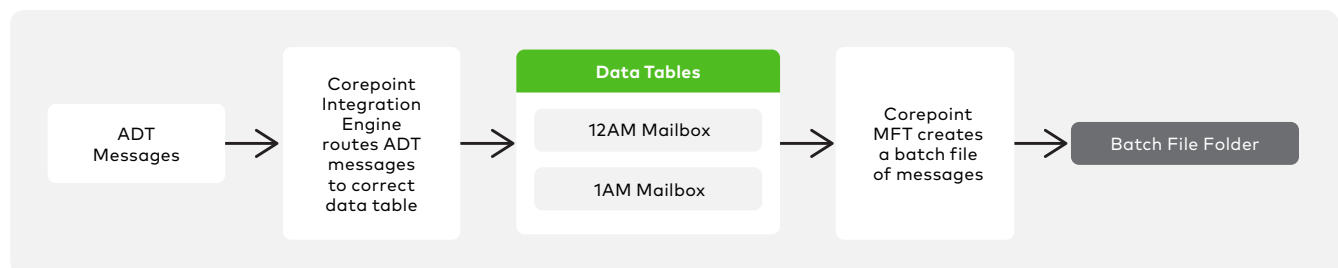
into one file per data table and send them out to the correct provider. Once the batch is successfully sent, the process will purge the data tables.



Workflow Example: ADT Message Aggregation and Distribution

Real-time ADT HL7 V2 messages are inserted into a data table by Corepoint Integration Engine. Corepoint MFT is utilized to batch these messages into a file for delivery. A process is configured in Corepoint MFT to run hourly which pulls all messages more than 24 hours

old from the data table, places them in a batch file folder, and then removes them from the data table. This continues: hourly batching of messages, placing in a batch file folder, and purging.





LYNIATE

Find out more at
www.lyniate.com/corepoint

Corepoint® Integration Engine is intended only for the electronic transfer, storage, or display of medical device data, or the electronic conversion of such data from one format to another in accordance with a preset specification as specified in the product manual and/or related documentation. Corepoint Integration Engine is not intended to be used for active patient monitoring, controlling or altering the functions or parameters of any medical device, or any other purpose relating to data obtained directly or indirectly from a medical device other than the transfer, storage, and conversion of such data from one format to another in accordance with preset specifications. InterOperability Bidco, Inc., doing business as LyniateTM, its affiliates and subsidiaries makes no warranties and the functionality described within may change without notice.

For more information, please see www.lyniate.com/meaningful-use. Corepoint® is a registered trademark of InterOperability Bidco, Inc., manufactured in the United States, by InterOperability Bidco, Inc. All other trademarks displayed in this document are the property of InterOperability Bidco, Inc., doing business as LyniateTM, its affiliates and subsidiaries or their respective owners, and may not be used without written permission of the owner. Corepoint Integration Engine is not intended to be used for diagnostic purposes, or to replace clinical judgment or responsibilities. All patient information shown in any imagery is for representation and demonstration purposes only and is not related to a real patient.

Copyright © 2020 InterOperability Bidco, Inc. doing business as Lyniate™ group of companies | All rights reserved | www.lyniate.com